

(a)

1 I

8 P

15 T

23 E

2 Q

9 N

16 R

24 B

3 W

10 X

17 K

4 O

11 U

18 F

5 S

12 J

19 A

6 V

13 L

20 D

7 H

14 M

21 G

22 C

Eunsu Choi
Australia

English (UK)
GYM-G7

Problem Number: 4

Number of sheet within problem: 1/2

apityi - father (Δ)

lhuka - mother (O)

piyaka - child of a man (Δ)

wardu - child of a woman (O)

nhuthi - elder brother (Δ)

kaku - elder sister (O)

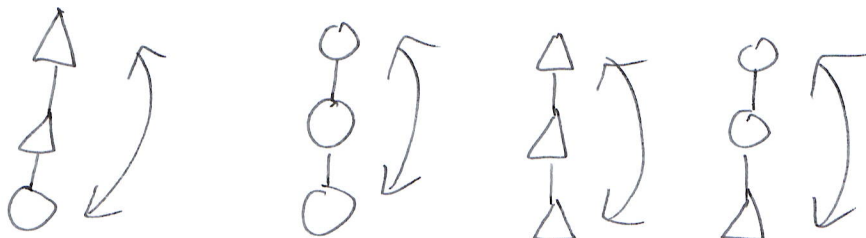
kupaku - younger sibling

nhupa - partner

kadnhini - ^(direct) grandparent / grandchild, where eldest

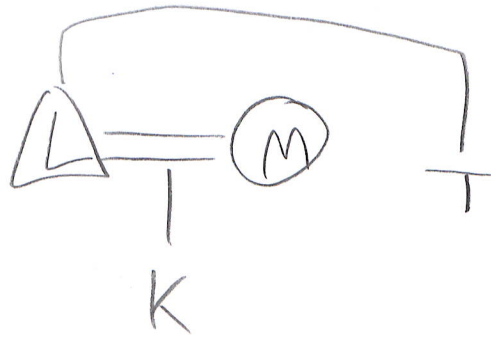
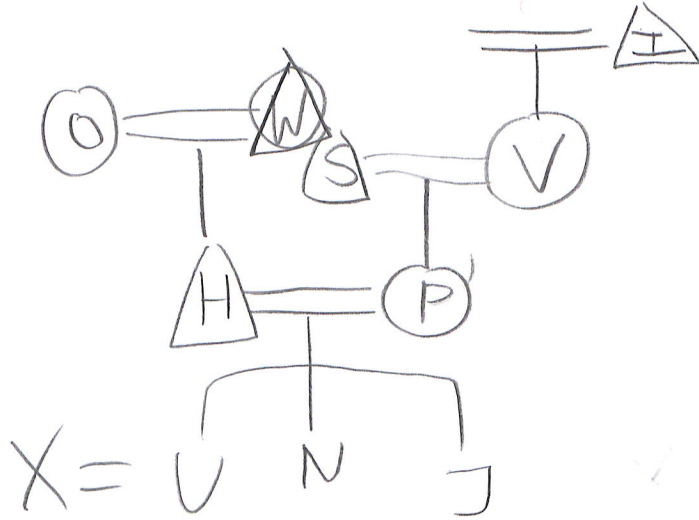
2 generations are the same gender.

eg:



arrow indicates kadnhini relationship.

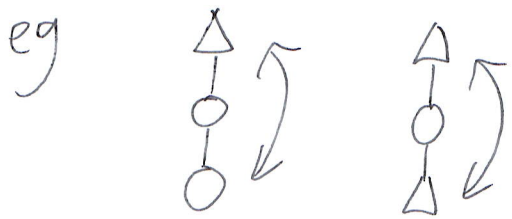
Ewusu Chai P4 ROUGH 3 CYM-077



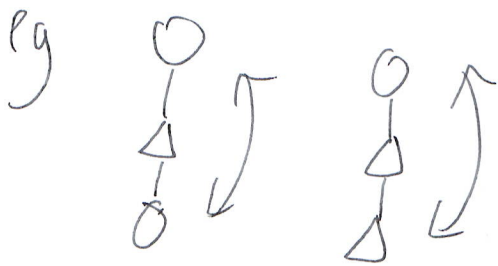
thanti - 2 gen (Δ)
 Raku - older ^{sister} sibling (O)
 kadnhini - 2 gen (O)
 amanyi - 2 gen (O)
 top 2 same gender

kadnhini
 Δ O O \uparrow O O O \downarrow
 Δ Δ Δ \uparrow
 O O O \uparrow
 O O O \downarrow
 Δ Δ O \downarrow
 thanti
 Δ O O \downarrow
 Δ O Δ \downarrow
 O O Δ \uparrow
 Δ O Δ \uparrow

thanti - grandparent / grandchild, where eldest
2 gens not same gender; eldest gen is male (Δ)



amanyi - grandparent / grandchild, where
eldest 2 gens not same gender; eldest
gen female (o)



Eunsu Choi
Australia

English (UK)
GYM-G7

Problem Number: 4

Number of sheet within problem: 2/2

- (b)
- (i) nhupa
 - (ii) piyaka
 - (iii) lhuka
 - (iv) apityi
 - (v) kupaku
 - (vi) amanyi
 - (vii) thanti
 - (viii) wardu
 - (ix) lhuka